

HUDSON HOUSE

TAVISTOCK STREET, LONDON, WC2E 7PP



GRYPHON
PROPERTY PARTNERS



DESCRIPTION

In 1904, Sir Edwin Lutyens, a renowned architect of English country houses, was commissioned to build Hudson House, 8 Tavistock Street, London WC2 as the headquarters of Country Life Magazine. Located just behind the famous Covent Garden Market, this unique period building now houses a modern business centre offering office space, virtual office services and meeting rooms of a superior quality. The building's beautifully designed serviced offices are arranged across seven floors and are available to rent on flexible terms. Grade II listed, Hudson House still retains many original country house style features including a beautiful stone facade, original marble entrance, high ceilings and elegant fireplaces. Tall windows lend offices and meeting rooms a great sense of light and space. The building is wonderfully located in a quiet street set within the vibrant and fashionable area of Covent Garden.

LOCATION

Located on the south side of Covent Garden piazza, you are ideally placed close Covent Garden (Piccadilly line) underground station. Providing you with a vast number of amenities, shops, restaurants, bars, theaters etc. a very popular area of London, known for its live performers and high footfall.

SPECIFICATION/AMENITIES

- Conference facilities
- Virtual Offices
- Meeting rooms available for hire
- Secure premises
- High speed broadband
- Air Conditioning

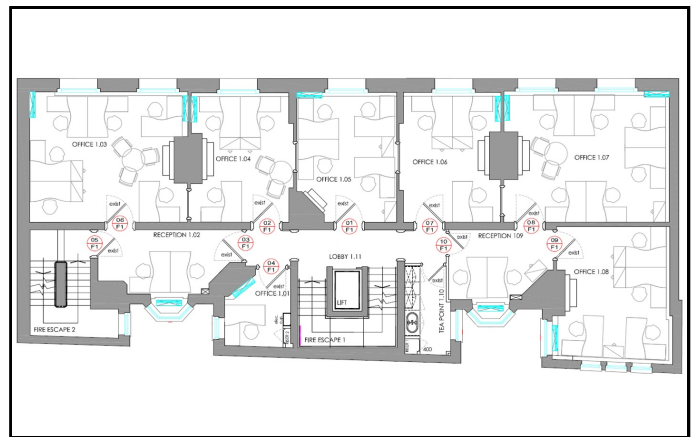
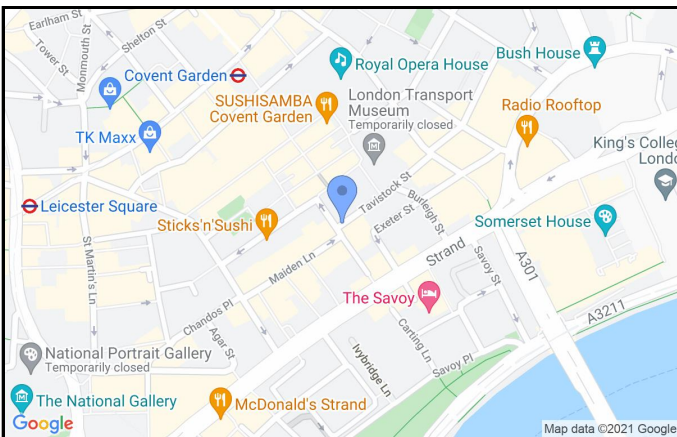
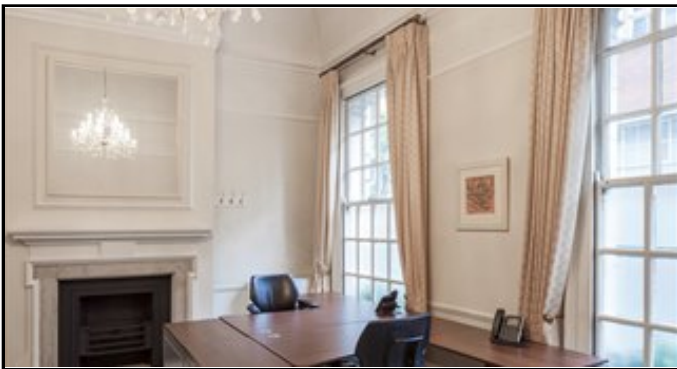


HUDSON HOUSE

TAVISTOCK STREET, LONDON, WC2E 7PP



GRYPHON
PROPERTY PARTNERS



TERMS

LEASE

Flexible by arrangement

VAT

Elected
Subject to Contract

Gryphon Property Partners for themselves and for the vendors or lessors of this property whose agents they are, give notice that:- a. the particulars are set out as a general outline only for guidance and do not constitute, nor constitute part of, an offer or contract; b. all descriptions, dimensions, references to condition and necessary permissions for use and occupation, and other details are believed to be correct, but any intending purchasers, tenants or third parties should not rely on them as statements or representations of fact but satisfy themselves that they are correct by inspection or otherwise; c. All properties are measured in accordance with the RICS property measurement, 1st Edition May 2015 (incorporating IPMS) unless designated NIA/GIA/GEA, in which case properties are measured in accordance with the RICS Code of Measuring Practice (6th Edition); d. Any images may be computer generated. Any photographs show only certain parts of the property as they appeared at the time they were taken. May 2021

VIEWING

Viewing strictly by prior appointment with the sole agent:

JAMIE MAJOR

0203 440 9809

jamie.major@gryphonpropertypartners.com