

45 MOORFIELDS

LONDON, EC2Y 9AE



GRYPHON
PROPERTY PARTNERS



DESCRIPTION

Opened in January 2012, this Centre is well located in the heart of the Moorgate district of the City of London and situated directly opposite Moorgate station whilst Bank and Liverpool Street stations are within easy walking distance.

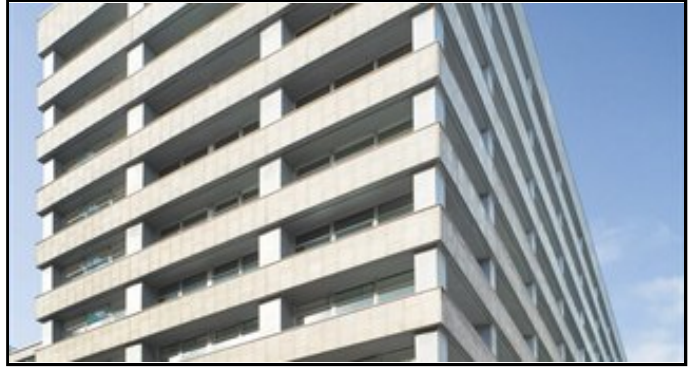
There are many different sized offices to suit all types of businesses as well as a fully staffed reception and onsite management team.

LOCATION

This serviced office building at 45 Moorefields is directly opposite Moorgate Tube Station (Northern Line). Bank, Barbican and Liverpool Street stations are also within walking distance which mean getting anywhere in the capital is easy from Moorefields.

SPECIFICATION/AMENITIES

- Virtual Offices
- Hot Desking
- Meeting rooms available for hire
- 24hr manned security
- 24hr access
- High speed broadband



45 MOORFIELDS

LONDON, EC2Y 9AE



GRYPHON
PROPERTY PARTNERS



TERMS

LEASE

Flexible by arrangement

VAT

Standard Contract

Gryphon Property Partners for themselves and for the vendors or lessors of this property whose agents they are, give notice that:- a. the particulars are set out as a general outline only for guidance and do not constitute, nor constitute part of, an offer or contract; b. all descriptions, dimensions, references to condition and necessary permissions for use and occupation, and other details are believed to be correct, but any intending purchasers, tenants or third parties should not rely on them as statements or representations of fact but satisfy themselves that they are correct by inspection or otherwise; c. All properties are measured in accordance with the RICS property measurement, 1st Edition May 2015 (incorporating IPMS) unless designated NIA/GIA/GEA, in which case properties are measured in accordance with the RICS Code of Measuring Practice (6th Edition); d. Any images may be computer generated. Any photographs show only certain parts of the property as they appeared at the time they were taken. September 2020

VIEWING

Viewing strictly by prior appointment with the sole agent:

JAMIE MAJOR

0203 440 9809

jamie.major@gryphonpropertypartners.com