

27-28 CLEMENT'S LANE

LONDON, EC4N 7AE



GRYPHON
PROPERTY PARTNERS



DESCRIPTION

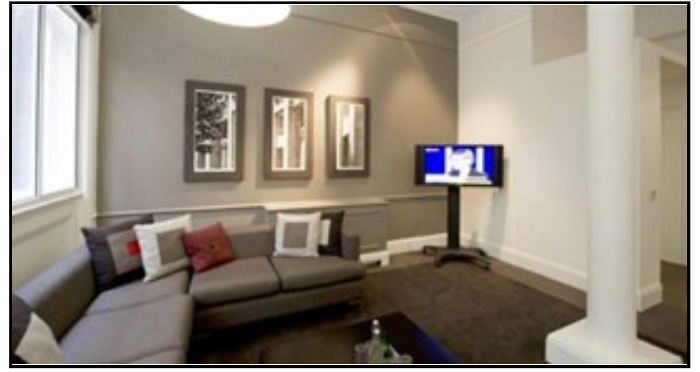
Taking its name from the church in the famous nursery rhyme 'Oranges and Lemons', St Clements House offers offices with exceptional staff. Newly refurbished with stunning contemporary decor and a fascinating choice of local attractions ranging from the first London coffee shop to Monument (where the Great Fire of London started). These serviced offices can accommodate any size of business from a start up to an established company.

LOCATION

These serviced offices are in EC4 and are moments from Bank Station in the heart of the City of London. Bank Station is one of the busiest underground interchanges with access to the DLR, Northern and Central lines.

SPECIFICATION/AMENITIES

- Meeting rooms and business lounge for more informal meetings
- PA/Secretarial Support
- Catering Services
- 24hr manned security
- Air Conditioning

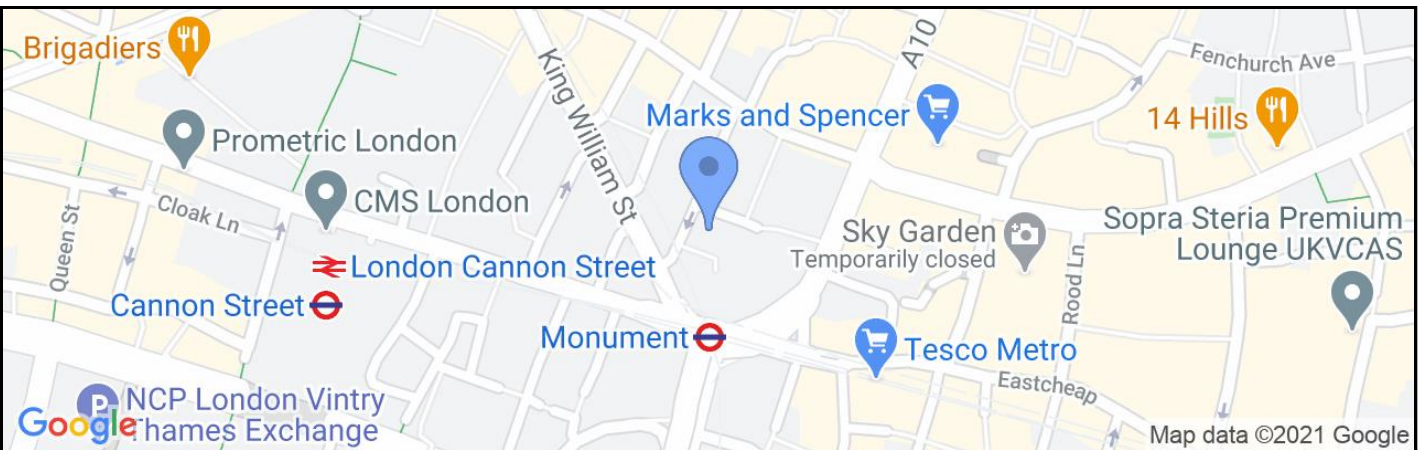
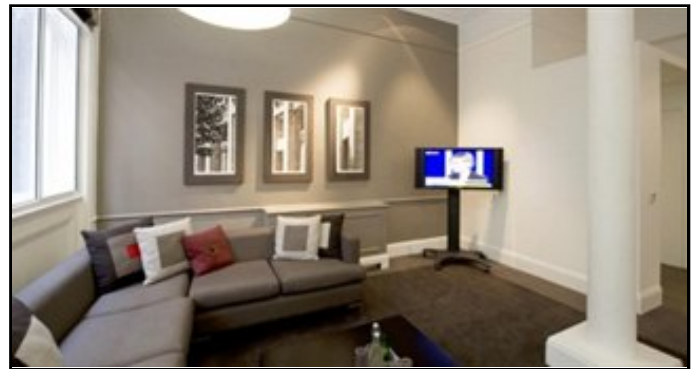


27-28 CLEMENT'S LANE

LONDON, EC4N 7AE



GRYPHON
PROPERTY PARTNERS



TERMS

LEASE

Flexible by arrangement

VAT

Standard Contract

Gryphon Property Partners for themselves and for the vendors or lessors of this property whose agents they are, give notice that:- a. the particulars are set out as a general outline only for guidance and do not constitute, nor constitute part of, an offer or contract; b. all descriptions, dimensions, references to condition and necessary permissions for use and occupation, and other details are believed to be correct, but any intending purchasers, tenants or third parties should not rely on them as statements or representations of fact but satisfy themselves that they are correct by inspection or otherwise; c. All properties are measured in accordance with the RICS property measurement, 1st Edition May 2015 (incorporating IPMS) unless designated NIA/GIA/GEA, in which case properties are measured in accordance with the RICS Code of Measuring Practice (6th Edition); d. Any images may be computer generated. Any photographs show only certain parts of the property as they appeared at the time they were taken. March 2021

VIEWING

Viewing strictly by prior appointment

JAMIE MAJOR

0203 440 9809

jamie.major@gryphonpropertypartners.com