



DESCRIPTION

Waterloo House Business Centre is a 5 storey modern red brick office building which has recently been refurbished to a high quality finish. It benefits from excellent natural light and exposed decorative brickwork resulting in an inspiring and productive working environment. This centre offers meeting room access, breakout space and a fully staffed reception with a friendly and professional which helps ensure your business runs smoothly.

LOCATION

This building is just a short walk to both Waterloo and Lambeth North Tube Stations, as well as being served by several major bus routes making it extremely well connected for access into all areas of London. This location also has a number of excellent bars and restaurants suitable for both casual and work-related events.

SPECIFICATION/AMENITIES

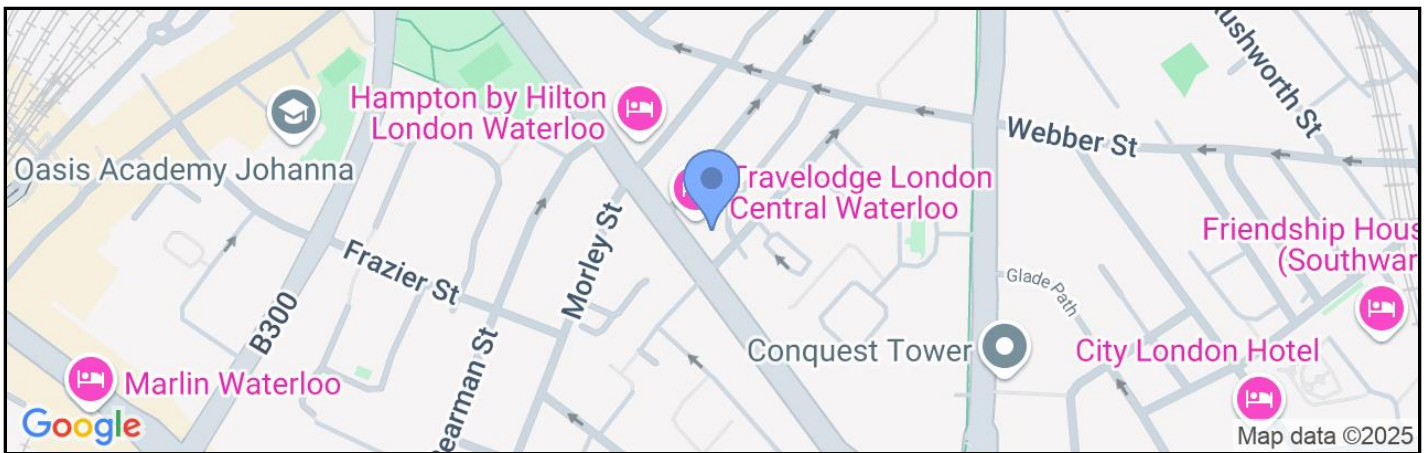
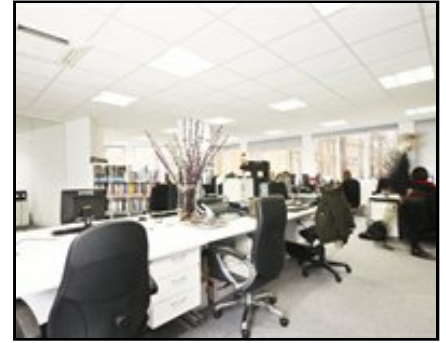
- Gym
- Staffed reception with postal service
- Catering Services
- IT Solutions
- Fully furnished offices
- 24hr access
- High speed broadband

207 WATERLOO ROAD

LONDON, SE1 8XD



GRYPHON
PROPERTY PARTNERS



TERMS

LEASE

Flexible by arrangement

VAT

Elected

VIEWING

Viewing strictly by prior appointment with the sole agent:

ANDREW MCCALLUM

0203 440 9809

andrew@gryphon.uk.com

Subject to Contract

Gryphon Property Partners for themselves and for the vendors or lessors of this property whose agents they are, give notice that:- a. the particulars are set out as a general outline only for guidance and do not constitute, nor constitute part of, an offer or contract; b. all descriptions, dimensions, references to condition and necessary permissions for use and occupation, and other details are believed to be correct, but any intending purchasers, tenants or third parties should not rely on them as statements or representations of fact but satisfy themselves that they are correct by inspection or otherwise; c. All properties are measured in accordance with the RICS property measurement, 1st Edition May 2015 (incorporating IPMS) unless designated NIA/GIA/GEA, in which case properties are measured in accordance with the RICS Code of Measuring Practice (6th Edition); d. Any images may be computer generated. Any photographs show only certain parts of the property as they appeared at the time they were taken. February 2025