

7 CARLISLE STREET

LONDON, W1D 3ST



GRYPHON
PROPERTY PARTNERS



DESCRIPTION

This quirky period building which was once host to the Partisan Coffee House in the late 50's has a wonderful mix of original features and modern design. The offices are air conditioned, bright, and offer a warm and intimate working environment which is totally in keeping with the area.

Meeting rooms are available to hire on an ad hoc basis which keeps costs down for the occasional meeting room user. There are fully stocked kitchens with breakout space for informal meetings.

LOCATION

Located just off Soho Square, the building is in close proximity to Tottenham Court Road (Central and Northern Lines along with the upcoming Crossrail). There are a huge amount of restaurants and bars in the area which are great for entertaining clients or after work socialising. Oxford Street and Regent Street with their multitude of shops are only a few minutes walk away which is great for shopping but a disaster for your bank balance.

SPECIFICATION/AMENITIES

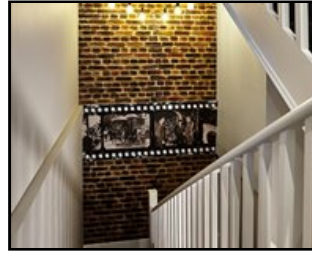
- IT Solutions
- Meeting rooms available for hire
- 24hr access
- High speed broadband
- Air conditioned

7 CARLISLE STREET

LONDON, W1D 3ST



GRYPHON
PROPERTY PARTNERS



TERMS

LEASE

Flexible by arrangement

VAT

Elected

VIEWING

Viewing strictly by prior appointment with the sole agent:

ANDREW MCCALLUM

0203 440 9809

andrew@gryphon.uk.com

Subject to Contract

Gryphon Property Partners for themselves and for the vendors or lessors of this property whose agents they are, give notice that:- a. the particulars are set out as a general outline only for guidance and do not constitute, nor constitute part of, an offer or contract; b. all descriptions, dimensions, references to condition and necessary permissions for use and occupation, and other details are believed to be correct, but any intending purchasers, tenants or third parties should not rely on them as statements or representations of fact but satisfy themselves that they are correct by inspection or otherwise; c. All properties are measured in accordance with the RICS property measurement, 1st Edition May 2015 (incorporating IPMS) unless designated NIA/GIA/GEA, in which case properties are measured in accordance with the RICS Code of Measuring Practice (6th Edition); d. Any images may be computer generated. Any photographs show only certain parts of the property as they appeared at the time they were taken. September 2023