

# 48 WARWICK STREET

SOHO, W1B 5AW



GRYPHON  
PROPERTY PARTNERS



## DESCRIPTION

Located at the south end of Warwick Street, this new business centre boasts a full height atrium along with a roof terrace providing views to Piccadilly Circus and even as far as The Shard. The building totals 34,000 sq ft over five floors. The state of the art facilities are all finished to a very high standard to match its surrounding area. Private offices will be made available in a variety of sizes from 2 -145 workstations, as well as break out areas, meeting rooms, hub working area and virtual offices as well.

## LOCATION

Just a couple minutes' walk from Piccadilly Circus (Piccadilly and Bakerloo lines) and five minute's from Oxford Circus (Central, Victoria and Bakerloo lines) providing you with easy access from all corners of London. Also in a perfect position to take advantage of the fantastic amenities close by that the West End is famous for.

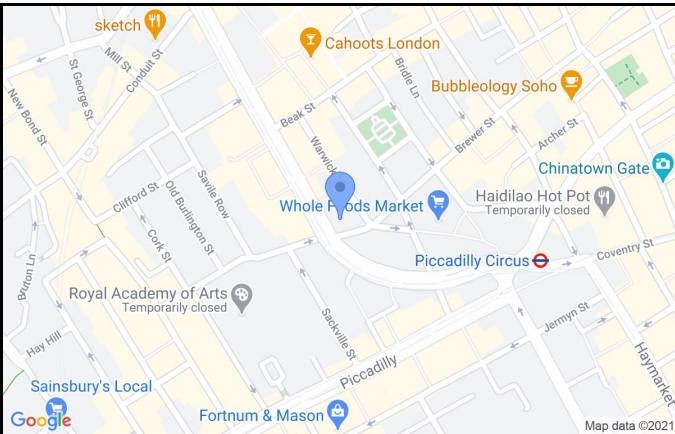
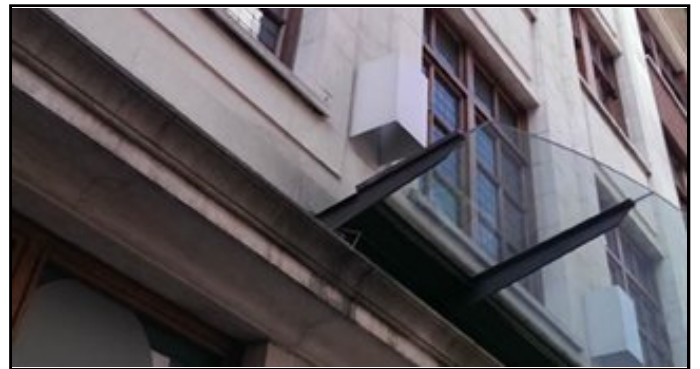


# 48 WARWICK STREET

SOHO, W1B 5AW



GRYPHON  
PROPERTY PARTNERS



## TERMS

### LEASE

Flexible by arrangement

### VAT

Elected  
Subject to Contract

Gryphon Property Partners for themselves and for the vendors or lessors of this property whose agents they are, give notice that:- a. the particulars are set out as a general outline only for guidance and do not constitute, nor constitute part of, an offer or contract; b. all descriptions, dimensions, references to condition and necessary permissions for use and occupation, and other details are believed to be correct, but any intending purchasers, tenants or third parties should not rely on them as statements or representations of fact but satisfy themselves that they are correct by inspection or otherwise; c. All properties are measured in accordance with the RICS property measurement, 1st Edition May 2015 (incorporating IPMS) unless designated NIA/GIA/GEA, in which case properties are measured in accordance with the RICS Code of Measuring Practice (6th Edition); d. Any images may be computer generated. Any photographs show only certain parts of the property as they appeared at the time they were taken. March 2021

## VIEWING

Viewing strictly by prior appointment with the sole agent:

**JAMIE MAJOR**

0203 440 9809

[jamie.major@gryphonpropertypartners.com](mailto:jamie.major@gryphonpropertypartners.com)