

# 21 GLOUCESTER PLACE

MARYLEBONE, W1U 8HR



GRYPHON  
PROPERTY PARTNERS



## DESCRIPTION

These serviced offices have been recently refurbished to the highest possible standard. Modern facilities have been added whilst keeping the traditional look and feel of the Grade 2 listed building. There are 15 offices which range in size within the building and are available to let on flexible terms to suit all businesses. Two onsite meeting rooms are available to hire on an ad hoc basis by the hour, half day and full day.

## LOCATION

21 Gloucester Place is centrally located in fashionable Marylebone with excellent local amenities and transport links. Tenants are spoilt for choice when it comes to restaurants, cafes and bars in close proximity with Chilton Firehouse, Locanda Locatelli and Natural Kitchen to name but a few. For those who like to shop on their lunch break, Selfridges is a few streets away and is one of the most famous department stores in London with designer and high street labels under one roof. Marble Arch (central line) and Bond Street (central and jubilee lines) are within 5 minutes walk which gives excellent access to all of central London.

## SPECIFICATION/AMENITIES

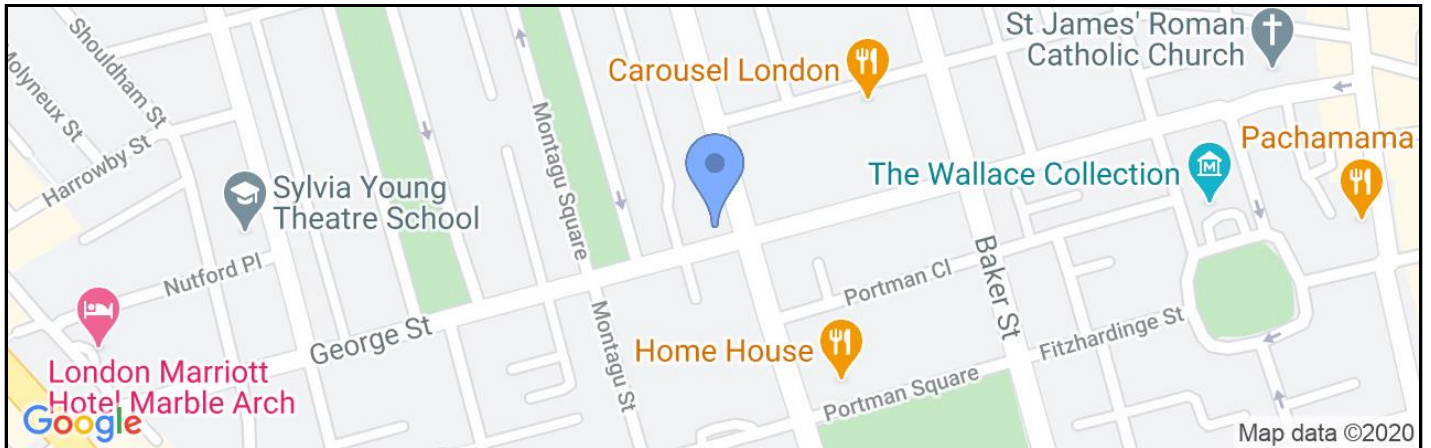
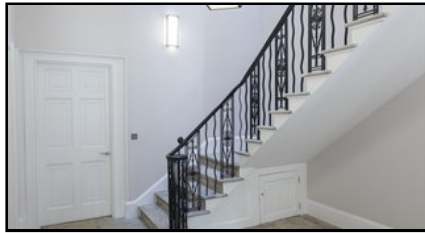
- Free local and national calls
- Shower facilities with complimentary toiletries and linen
- Full complement of centre-based staff and administrative support
- Market leading technology and telephony
- Light refreshments including soft drinks and confectionery items
- Bicycle storage

# 21 GLOUCESTER PLACE

MARYLEBONE, W1U 8HR



GRYPHON  
PROPERTY PARTNERS



## TERMS

### LEASE

Flexible by arrangement

### VAT

Elected

## VIEWING

Viewing strictly by prior appointment with the sole agent:

### JAMIE MAJOR

0203 440 9809

[jamie.major@gryphonpropertypartners.com](mailto:jamie.major@gryphonpropertypartners.com)

### Subject to Contract

Gryphon Property Partners for themselves and for the vendors or lessors of this property whose agents they are, give notice that:- a. the particulars are set out as a general outline only for guidance and do not constitute, nor constitute part of, an offer or contract; b. all descriptions, dimensions, references to condition and necessary permissions for use and occupation, and other details are believed to be correct, but any intending purchasers, tenants or third parties should not rely on them as statements or representations of fact but satisfy themselves that they are correct by inspection or otherwise; c. All properties are measured in accordance with the RICS property measurement, 1st Edition May 2015 (incorporating IPMS) unless designated NIA/GIA/GEA, in which case properties are measured in accordance with the RICS Code of Measuring Practice (6th Edition); d. Any images may be computer generated. Any photographs show only certain parts of the property as they appeared at the time they were taken. October 2020