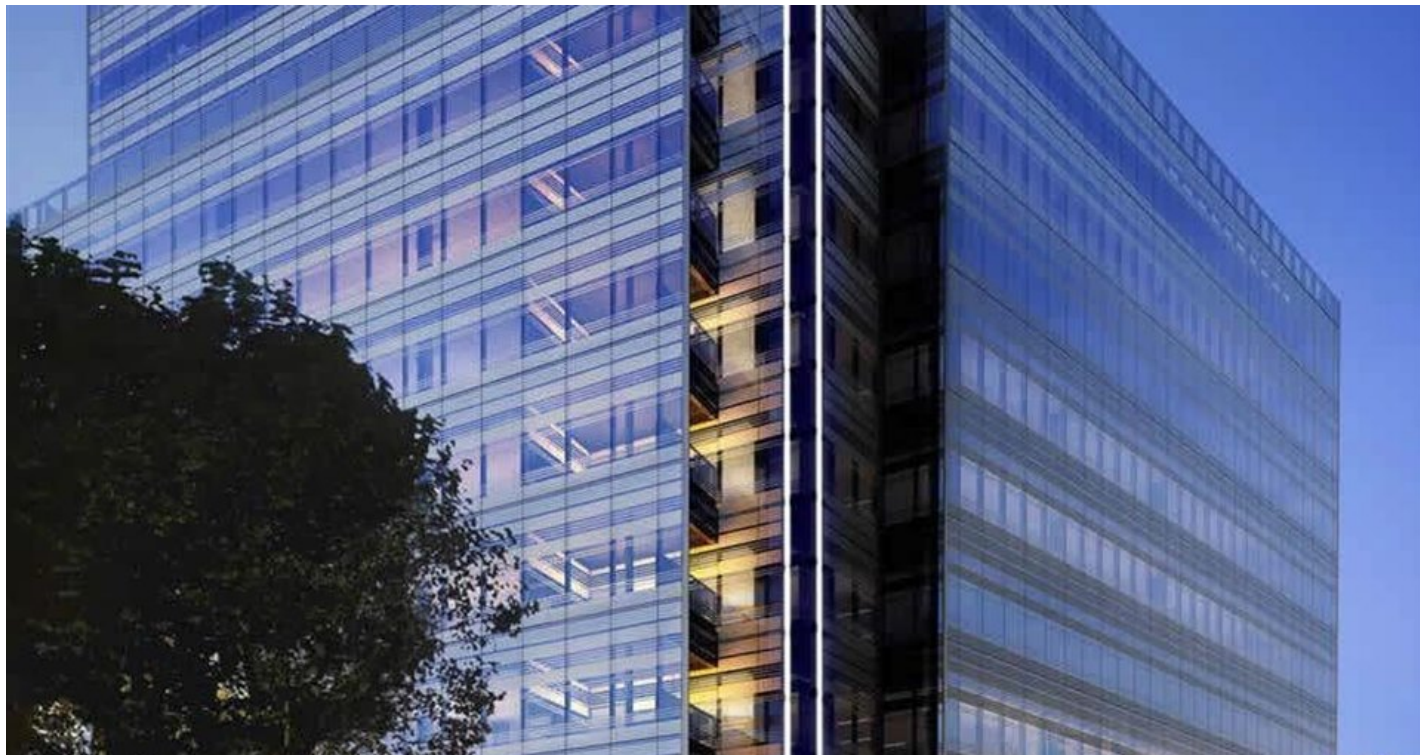


12 HAMMERSMITH GROVE

LONDON, W6 7AP



GRYPHON
PROPERTY PARTNERS



DESCRIPTION

Situated inside a stunning sleek glass building and spread over three floors with floor-to-ceiling windows, this centre is drenched in an abundance of natural light. It has been designed to promote productivity and inspiration. Every detail of this building has been considered to provide everything a business needs to function smoothly and consists of a reception manned by a friendly team, private offices, conference rooms and breakout space. Because of this, it attracts all kinds of businesses varying in both industry and size meaning it is a fantastic place to base your business.

LOCATION

Conveniently located just minutes away from Hammersmith station, this centre has access to the underground network as well as access to direct links to and from Paddington, Green Park, King's Cross, and Liverpool Street stations. This location also boasts some of the city's finest pubs such as The Grove and Stonemasons Arms meaning after work team drinks or networking couldn't be easier.

SPECIFICATION/AMENITIES

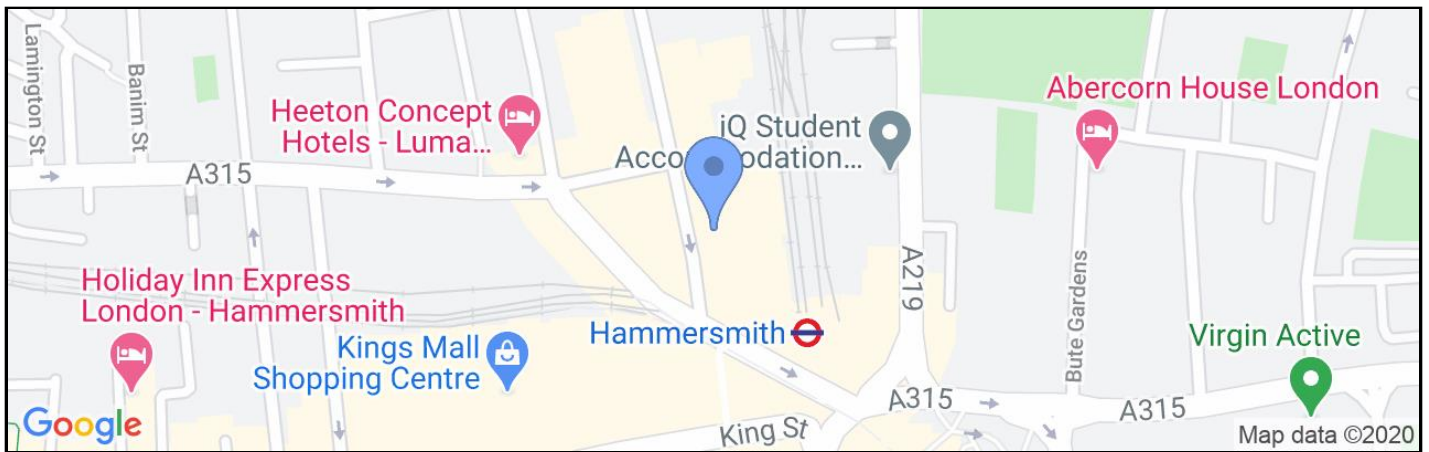
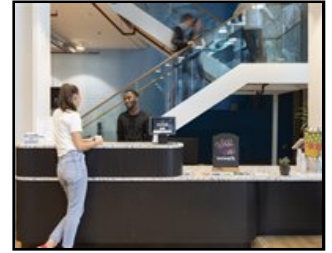
- Onsite Staff
- Cleaning Services
- Conference Rooms
- High Speed Internet
- Printing
- Unique Common Areas
- 24/7 access
- CCTV

12 HAMMERSMITH GROVE

LONDON, W6 7AP



GRYPHON
PROPERTY PARTNERS



TERMS

LEASE

Flexible by arrangement

VAT

Elected

VIEWING

Viewing strictly by prior appointment with the sole agent:

JAMIE MAJOR

0203 440 9809

jamie.major@gryphonpropertypartners.com

Subject to Contract

Gryphon Property Partners for themselves and for the vendors or lessors of this property whose agents they are, give notice that:- a. the particulars are set out as a general outline only for guidance and do not constitute, nor constitute part of, an offer or contract; b. all descriptions, dimensions, references to condition and necessary permissions for use and occupation, and other details are believed to be correct, but any intending purchasers, tenants or third parties should not rely on them as statements or representations of fact but satisfy themselves that they are correct by inspection or otherwise; c. All properties are measured in accordance with the RICS property measurement, 1st Edition May 2015 (incorporating IPMS) unless designated NIA/GIA/GEA, in which case properties are measured in accordance with the RICS Code of Measuring Practice (6th Edition); d. Any images may be computer generated. Any photographs show only certain parts of the property as they appeared at the time they were taken. December 2020