

# 54 SOUTH MOLTON STREET

55 S MOLTON ST, MAYFAIR, W1K 5SQ



GRYPHON  
PROPERTY PARTNERS



## DESCRIPTION

This boutique period property has been subjected to an extensive restoration and refurbishment to provide five private offices which vary in size and are spread over three floors. Benefiting from super-fast fibre internet, an on-site meeting room and kitchenette, these offices are the perfect fit for any modern-day business.

## LOCATION

Situated in a pedestrianised precinct located in the heart of Mayfair, this property provides an exclusive and unique office location. As well as the multitude of shops of Oxford on your doorstep, Bond Street Station is just seconds away meaning you will not only be extremely well connected via the Jubilee and Central lines, you will also be extremely easy for your clients to find.

## SPECIFICATION/AMENITIES

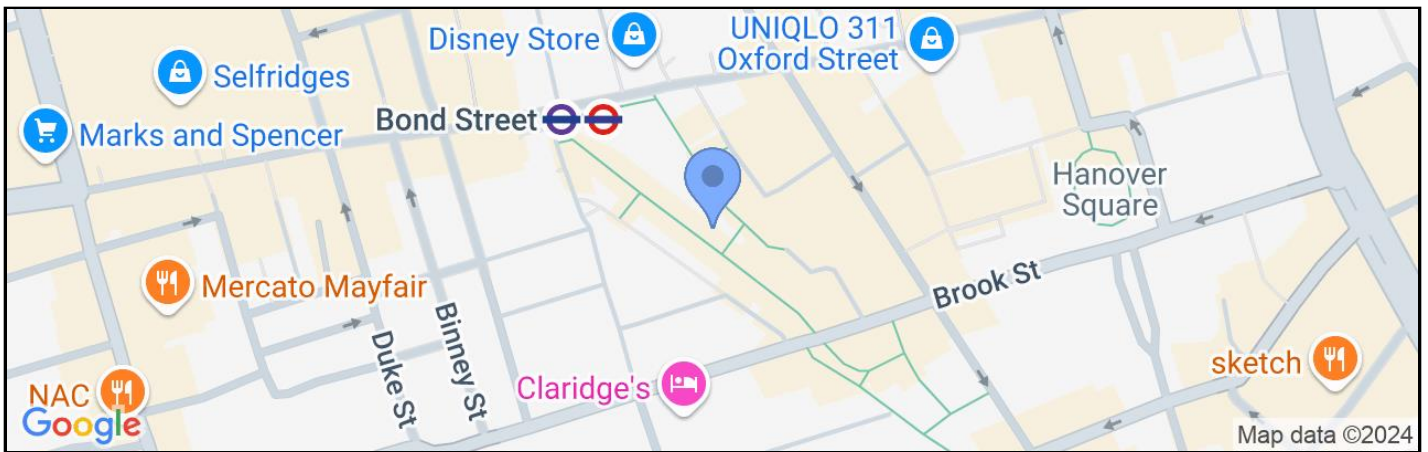
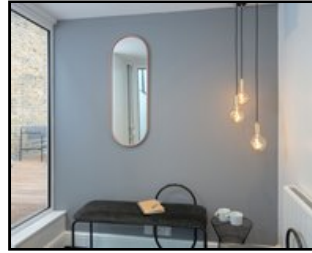
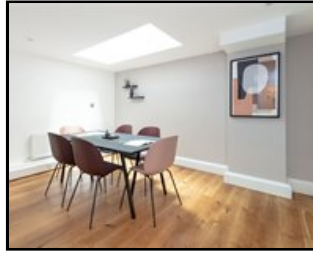
- Meeting Rooms
- Kitchenette
- Reception
- WiFi
- Air conditioning
- Phone Booth

# 54 SOUTH MOLTON STREET

55 S MOLTON ST, MAYFAIR, W1K 5SQ



GRYPHON  
PROPERTY PARTNERS



## TERMS

### LEASE

Flexible by arrangement

### VAT

Elected

## VIEWING

Viewing strictly by prior appointment with the sole agent:

**ANDREW MCCALLUM**

0203 440 9809

[andrew@gryphon.uk.com](mailto:andrew@gryphon.uk.com)

### Subject to Contract

Gryphon Property Partners for themselves and for the vendors or lessors of this property whose agents they are, give notice that:- a. the particulars are set out as a general outline only for guidance and do not constitute, nor constitute part of, an offer or contract; b. all descriptions, dimensions, references to condition and necessary permissions for use and occupation, and other details are believed to be correct, but any intending purchasers, tenants or third parties should not rely on them as statements or representations of fact but satisfy themselves that they are correct by inspection or otherwise; c. All properties are measured in accordance with the RICS property measurement, 1st Edition May 2015 (incorporating IPMS) unless designated NIA/GIA/GEA, in which case properties are measured in accordance with the RICS Code of Measuring Practice (6th Edition); d. Any images may be computer generated. Any photographs show only certain parts of the property as they appeared at the time they were taken. October 2024