

GOLDSMITH BUILDING

MIDDLE TEMPLE, LONDON, EC4



GRYPHON
PROPERTY PARTNERS



DESCRIPTION

Goldsmith Building is a period building with original features and excellent floor to ceiling heights. The available units will be refurbished whilst keeping original features.

ACCOMMODATION

FLOOR

2nd (west)

Lower Ground

AREA

635 sq ft

442 sq ft

TOTAL

Floor area subject to measurement

1,077 sq ft

LOCATION

The property is located just off Fleet Street, situated within the secluded Middle Temple estate. Temple, Blackfriars, Chancery Lane and City Thameslink Stations and all within a 10 minute walk.

SPECIFICATION/AMENITIES

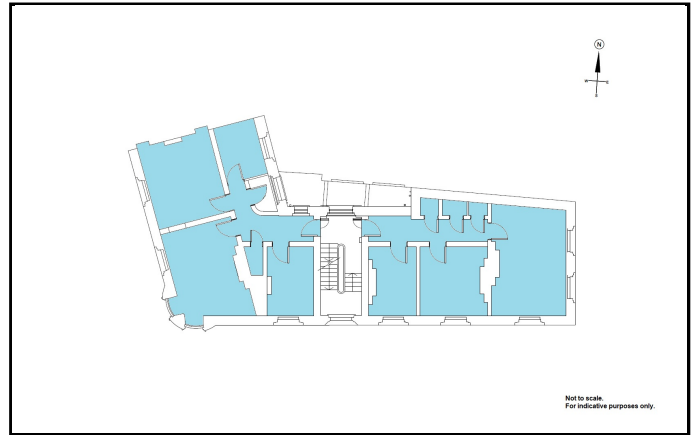
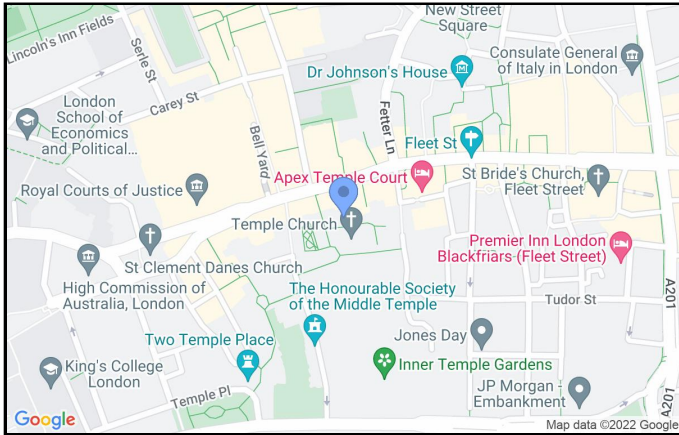
- Newly refurbished with original features
- Central heating
- 3m floor to ceiling heights
- Demised WC
- 24 hour access

GOLDSMITH BUILDING

MIDDLE TEMPLE, LONDON, EC4



GRYPHON
PROPERTY PARTNERS



Not to scale.
For indicative purposes only.

TERMS

LEASE

Flexible by arrangement

RENT

On Application

RATES

TBC

SERVICE CHARGE

TBC

VAT

Elected

VIEWING

Viewing strictly by prior appointment with the sole agent:

COLIN HARGREAVES

0203 440 9804

colin.hargreaves@gryphonpropertypartners.com

JAMIE MAJOR

0203 440 9809

jamie.major@gryphonpropertypartners.com

Subject to Contract

Gryphon Property Partners for themselves and for the vendors or lessors of this property whose agents they are, give notice that:- a. the particulars are set out as a general outline only for guidance and do not constitute, nor constitute part of, an offer or contract; b. all descriptions, dimensions, references to condition and necessary permissions for use and occupation, and other details are believed to be correct, but any intending purchasers, tenants or third parties should not rely on them as statements or representations of fact but satisfy themselves that they are correct by inspection or otherwise; c. All properties are measured in accordance with the RICS property measurement, 1st Edition May 2015 (incorporating IPMS) unless designated NIA/GIA/GEA, in which case properties are measured in accordance with the RICS Code of Measuring Practice (6th Edition); d. Any images may be computer generated. Any photographs show only certain parts of the property as they appeared at the time they were taken. December 2022